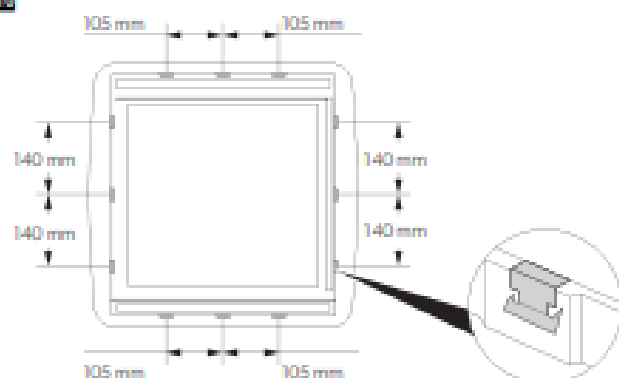


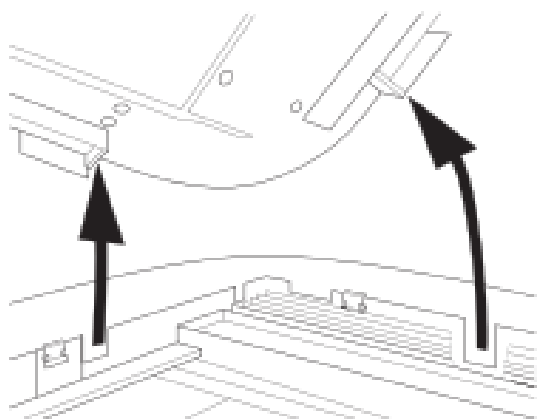
	mm	23-24	25-26	27-28	29-30	31-32	33-34	35-36	37-38	39-40	41-42
	mm	0	2	4	6	8	10	12	14	16	18
	mm	25					32				
	mm	43-44	45-46	47-48	49-50	51-52	53-54	55-56	57-58	59-60	
	mm	20	22	24	26	28	30	32	34	36	
	mm	40					52				



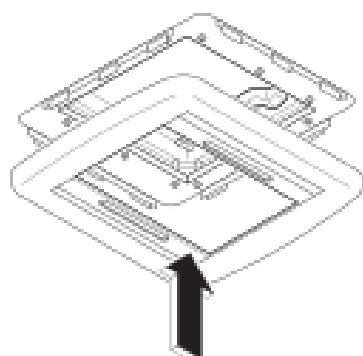
10



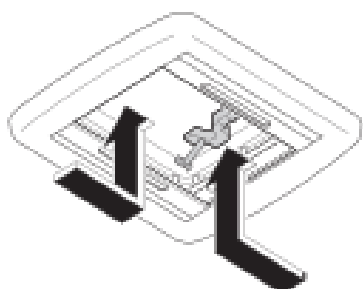
11



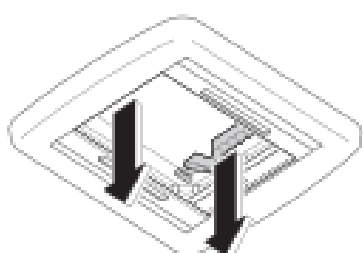
12



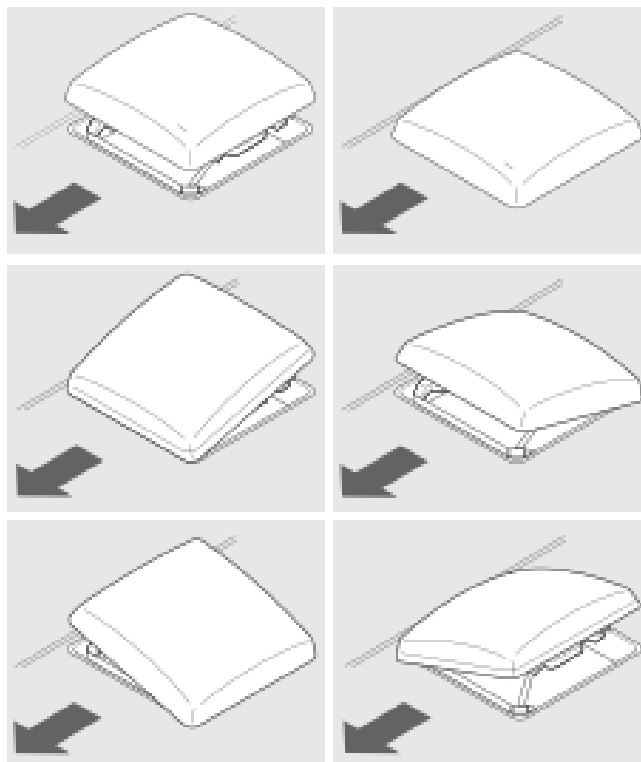
13



14

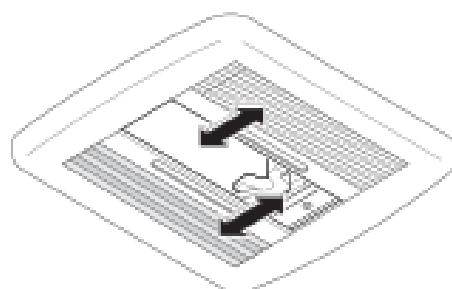


15

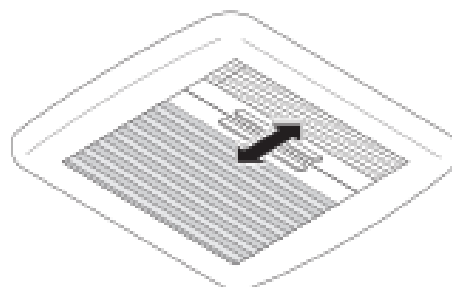


16

A



B



**Please read this instruction manual carefully before installation and first use, and store it in a safe place. If you pass on the product to another person, hand over this instruction manual along with it.**

## Table of contents

1	Explanation of symbols . . . . .	3
2	Safety and installation instructions . . . . .	4
3	Scope of delivery . . . . .	5
4	Optional extras . . . . .	5
5	Intended use . . . . .	5
6	Instructions before installation . . . . .	6
7	Installing the Mini Heki S . . . . .	6
8	Using Mini Heki S . . . . .	8
9	Maintaining and cleaning Mini Heki S . . . . .	8
10	Guarantee . . . . .	9
11	Disposal . . . . .	9

## 1 Explanation of symbols



### **WARNING!**

**Safety instruction:** Failure to observe this instruction can cause fatal or serious injury.



### **NOTICE!**

Failure to observe this instruction can cause material damage and impair the function of the product.



### **NOTE**

Supplementary information for operating the product.

## 2 Safety and installation instructions

**Please observe the prescribed safety instructions and stipulations from the vehicle manufacturer and service workshops.**

The manufacturer accepts no liability for damage in the following cases:

- Damage to the product resulting from mechanical influences
- Alterations to the product without express permission from the manufacturer
- Use for purposes other than those described in the operating manual



### **WARNING! Beware of injury**

Do **not** exceed the maximum allowable driving speed of 130 km/h, because this can damage the roof light. Parts that come loose may injure people in the vicinity.



### **NOTE**

If you do not have sufficient technical knowledge for installing the components in vehicles, you should have a specialist install the roof window in your vehicle.

Please note the following:

- If faults or disturbances occur, consult a specialist workshop immediately.
- Risk of breakage! Do not tread on the glass dome.
- Before starting your journey, check that the roof window is locked properly.
- Before starting your journey, check the roof window for damage (such as tension cracks in the acrylic glass).
- Do **not** open the roof window while driving.
- Do **not** open the window in strong wind or rain.
- Close the roof window if it rains or snows.
- Do **not** leave the vehicle with the roof window open.
- Keep the roof window free of snow and ice.

### 3 Scope of delivery

No. in fig. <b>1</b>	Quantity	Designation
1	1	Outer frame with glass dome
2	1	Mounting frame
3	1	Inner frame
4	12	Long fastening screws
	12	Short fastening screws
5	12	Fastening clip

### 4 Optional extras

Designation	Item no.
Spoiler	9104100260

### 5 Intended use

The Mini Heki S roof light is suitable for installing in caravans:

- Roof thicknesses 23 – 42 mm: Item no. 9104100289
- Roof thicknesses 43 – 60 mm: Item no. 9104100290

## 6 Instructions before installation

- Before installation, check the roof thickness of your vehicle. Consult the vehicle manufacturer if you have any questions.
- When choosing the installation location, observe the following:
  - Adjoining components (roof rack or attachment and reinforcing parts), cables and cabinets in the vehicle interior must not be damaged when sawing the hole.
  - Only fit the roof light on flat and parallel interior and exterior roof areas with a maximum inclination of 15° to the horizontal.
  - You may use an existing roof hole provided the roof light fits into it.

### 6.1 Pressing out the hole

See fig. **2**

### 6.2 Using the reinforcing rails

Supplementary to fig. **3**

- Before installation, check whether the roof hole needs reinforcing.
- Remove the foam according to the width of your reinforcing rail (not in scope of delivery) (**A**).
- Fit the reinforcing rails (**B**).

## 7 Installing the Mini Heki S

Supplementary to fig. **4**

The scope of delivery contains a mounting frame, which is suitable for roof thicknesses of 23 – 42 mm or 43 – 60 mm:

- Roof thicknesses 23 – 42 mm: Item no. 9104100289
- Roof thicknesses 43 – 60 mm: Item no. 9104100290

- Measure your roof thickness W.
- Shorten the sleeves to size H (see table).
- Use the screws with appropriate lengths (see table).



**See fig. 5**

- Check that the roof light has sufficient space around (approx. 1 to 2 mm) it in the roof opening.

**See fig. 6**

- Clean the roof opening in the mounting area.

**See fig. 7****NOTICE!**

Observe the instructions of the sealant manufacturer.

- Seal the mounting frame with a flexible non-hardening sealing compound (e.g. SikaLastomer-710).

**See fig. 8**

- Observe the direction of travel when installing.
- Place the outer frame in the middle of the roof opening.

**See fig. 9**

- Install the mounting frame.
- Tighten the screws 10 minutes after installation.

**See fig. 10**

- Install the fastening clips on the inner frame at the specified distances.

**See fig. 11**

- Fit the inner frame into the mounting frame.

**See fig. 12**

- Push the inner frame onto the mounting frame.
- After installing, check the roof light works properly.
- Remove the protective film from the acrylic glass.

**NOTE**

If the protective film is exposed to sunlight for too long, it cannot be taken off without leaving a residue.

- If necessary, enter the new vehicle height and weight in the vehicle documents.

## 8 Using Mini Heki S

### 8.1 Opening and closing the Mini Heki S (fig. 13 to fig. 15)

- Open and close the roof light as shown.

### 8.2 Opening and closing the roller blinds (fig. 16)



**NOTICE! Risk of damage due to a build-up of heat between the roller blind and the window.**

In strong sunlight, only close the blackout roller blind two thirds of the way.



**NOTE**

You can adjust the blackout roller blind and the flyscreen separately.

- Hold the recessed handle of the roller blind and pull it into the required position.

## 9 Maintaining and cleaning Mini Heki S



**NOTICE!**

Do not use any sharp or hard objects for cleaning since they may damage the acrylic glass.

Only use cleaning agents that are approved by the manufacturer. Acrylic glass polish (ref. no. 9600000128), special polishing cloth (ref. no. 9600000130) and acrylic glass cleaning agent (ref. no. 9600000129).



**NOTE**

The roof dome clouds over in bright sunshine. It becomes clear again as soon as it cools down.

- Clean the roller blind with mild soap and plenty of water.



## 10 Guarantee

The statutory warranty period applies. If the product is defective, please contact the service partner in your country (addresses on the back on the instruction manual).

Our experts will be happy to help you and will discuss the warranty process with you in more detail.

## 11 Disposal

- Place the packaging material in the appropriate recycling waste bins wherever possible.



If you wish to finally dispose of the product, ask your local recycling centre or specialist dealer for details about how to do this in accordance with the applicable disposal regulations.